

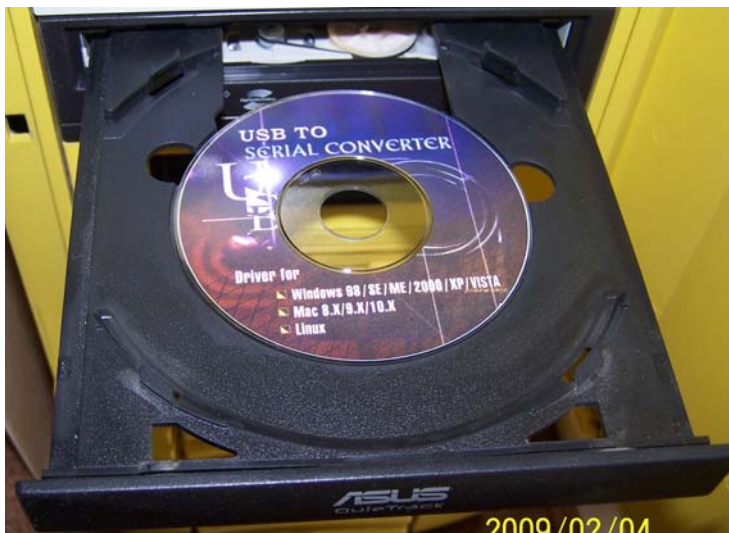
HOW TO INSTALL THE USB TO SERIAL PORT CONVERTER



You will need to install the driver before you connect the USB to Serial Port Converter to your computer.

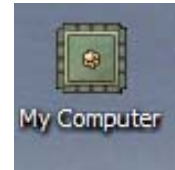


In the package you will find a small CD. Yes this will work in your CD ROM drive. If you open your drive and look at it carefully you'll see two rings

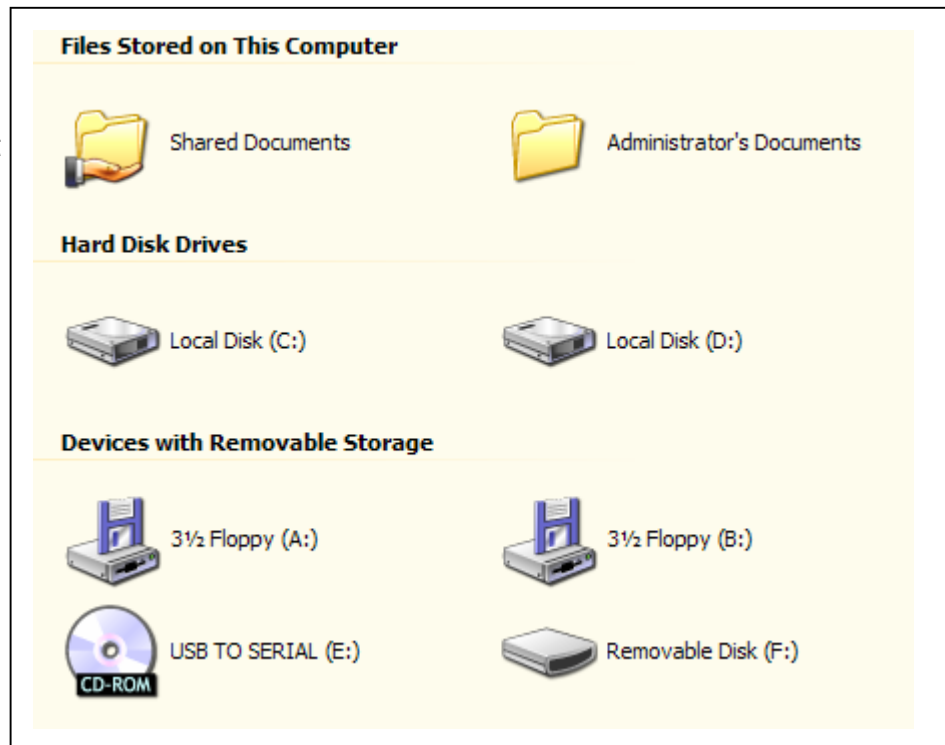


The smaller middle ring is just the right size for your small CD to fit into. Close the drive drawer with the CD in it. This is NOT an automatic running CD, so you'll need to look at the files on the CD.

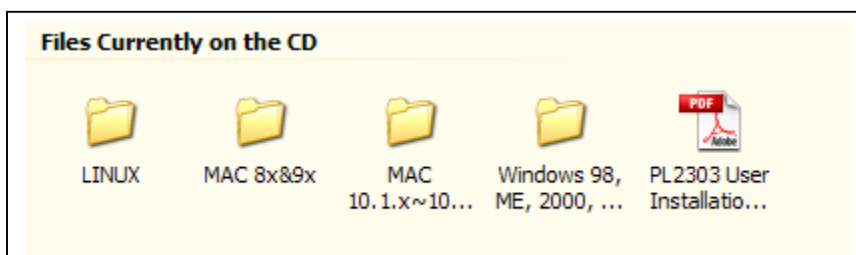
With the CD in the drive, go to the “MY COMPUTER” icon on your desktop. You will probably have a different icon on yours (I like to change things on my computer to my own liking), but your icon will say “MY COMPUTER” under it. If you don’t have an icon on your desktop, you can also access it from your START menu. Just click on the MY COMPUTER icon in either place and you’ll get a box on your monitor listing all the drives on your computer ...



Your drives and number of drives will vary from mine. On this list you can see that my CD-ROM drive is “E:”. Yours might be “D” or any other letter depending on how many hard drives you have on your computer. Notice the drive says “USB TO SERIAL” before the drive letter. This shows you have the CD in the drive and it is being recognized. (NOTE: I am using Windows XP Pro, but most versions of Windows will list the CD’s name by the drive letter.) Now double click on the drive the CD is in. You’ll see a new box now ...



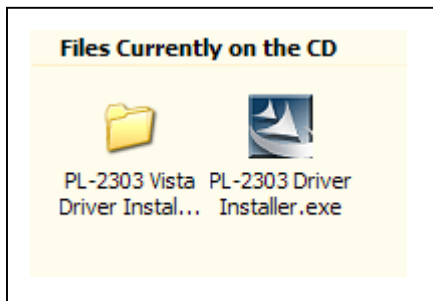
Now double click on the drive the CD is in. You’ll see a new box now ...



Now you’ll see a box similar to the one at the left which shows the files on the CD. You should have the same files as shown here. The file labeled “PL2303 User

Installatio...” is an install manual in Acrobat Reader format. You can double click on that and it will give you a step by step “how to” for installing the software. You’ll need Acrobat Reader on your computer to view it. Acrobat Reader is a free program that everyone should have. You can download it from <http://www.adobe.com> if you don’t already have it. There are 4 folders shown on the

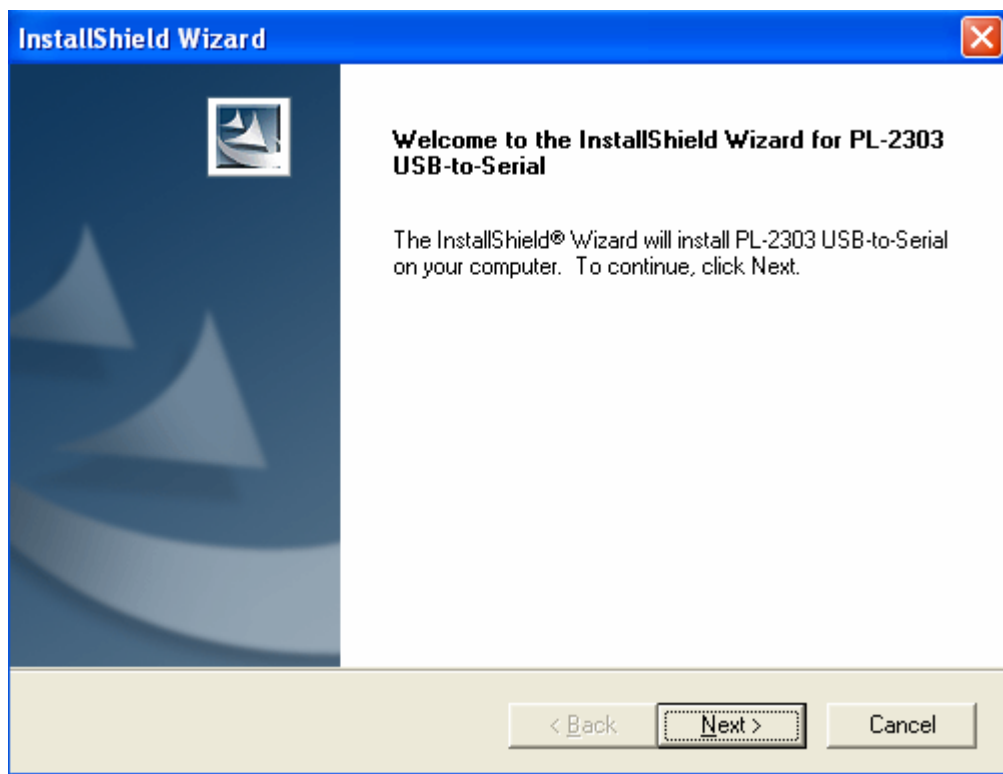
drive. You'll need to double click on the one for your operating system. For this tutorial I'm going to assume you have Windows XP or Vista, but I'm sure the other operating systems (Linux or Mac) will work in a similar way. After you double click on the folder for your operating system (I clicked on "Windows 98, ME, 2000..."), you'll see a new box ...



As you can see at the left, it brings up another list of files. If you are using Windows Vista you'll need to click on that folder to see the install file for Vista.

The file labeled "PL-2303 Driver Installer.exe" is the file to install the driver for other Windows operating systems, including XP. [NOTE: You might not see the ".exe" unless you have your operating system set to show all extensions, so you might only see "PL-2303 Driver Installer". Double click on that file (or the file in the folder for your operating system if it is Vista, Linux, or Mac.) to start the install program and follow the instructions in the program.

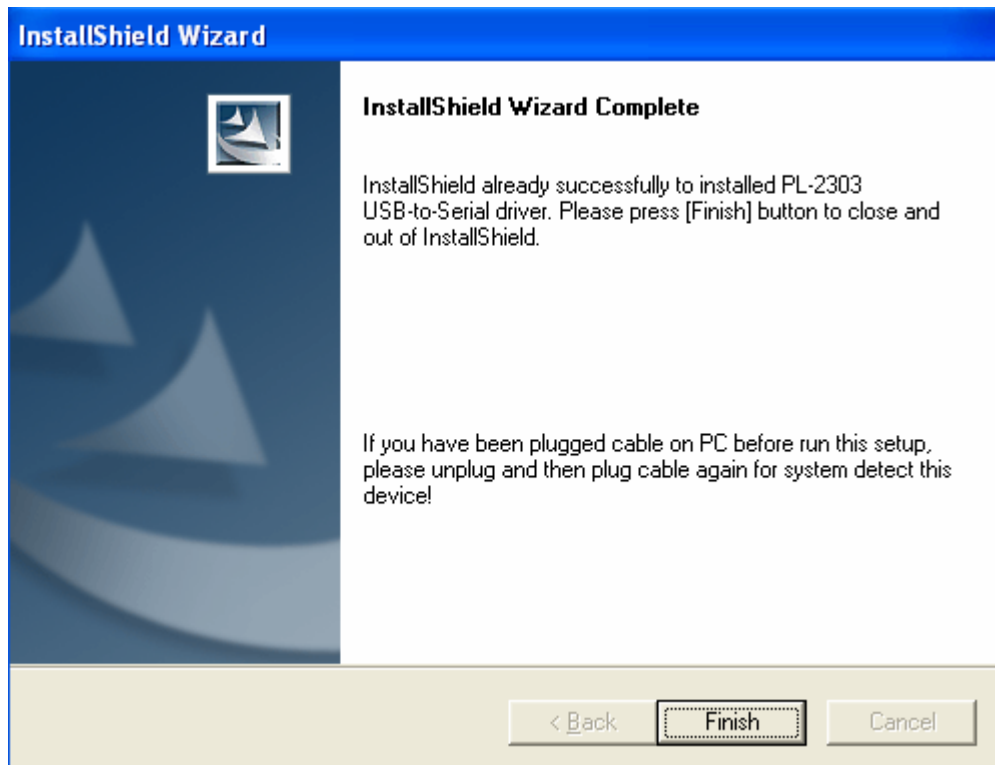
When I installed it, it came up with only two windows/boxes ... The first tells you this is the install wizard and looks like this ...



Simply click on the NEXT button at the bottom of the screen. After this you might see other screens (depending on your operating system), such as a "license agreement" screen and a "Hardware Installation" screen. If you see the "license

agreement” screen, you’ll need to click on the “I accept the terms of the license agreement” at the bottom right side, and then click the “NEXT” button at the bottom. If you see the “Hardware Installation” screen, it will say something like “this driver has not passed Windows Logo testing ...”. Just click on the “CONTINUE ANYWAY” button at the bottom of the screen. I didn’t see either of these screens with Windows XP Pro, but according to the manufacturer’s instructions they might show up with VISTA.

The driver will be installed and you’ll see a box like the one below telling you the installation is complete ...



Just click on the FINISH button at the bottom and you have the software installed. Now plug the USB end of the USB to Serial Converter into your computer’s USB port, and Windows will do the rest. [NOTE: If you plugged the USB to Serial converter into your computer’s port before you installed the driver, you’ll need to unplug it and plug it back in.]

That’s it. Now you can plug your interface into the serial end of the USB to serial adapter. You’ll need to know what serial/COMM port number Windows has assigned to your new serial port. See the tutorial on “How to find your COMM port number” to find it.